

ABOUT THE COMMONWEALTH OF VIRGINIA CAMPAIGN (CVC)



A close-up photograph of several hands holding up colorful paper cutouts. On the left, a hand holds a green and blue rainbow. In the center, a hand holds a yellow circle. To the right, a hand holds a red square. On the far right, a hand holds a large blue letter 'S'. Another hand at the bottom right holds a large blue letter 'E'. The background is a soft, out-of-focus light blue.

CVC is a statewide,
non-profit fundraising
program for employees

- Started in 1997
- State employees have donated more than \$52 million
- 120,000+ state employees are eligible to participate
- Employee participation is voluntary

A background image showing several hands holding up colorful paper cutouts. The cutouts include a teal semi-circle, an orange circle, a red square, and a blue semi-circle. The hands are positioned around the edges of the frame, with the cutouts held in the center.

Who benefits from CVC?

- Communities across the commonwealth, the nation, and the world.
- Hundreds of charities – large and small, local and national – participate each year.
- Campaign raises funds for nonprofit health, education, arts, environmental, and humanitarian organizations ... and many more.



How are CVC charities selected?



- Charities must reapply to be part of the campaign each year.
- All charities are prescreened by CVC and meet strict criteria.

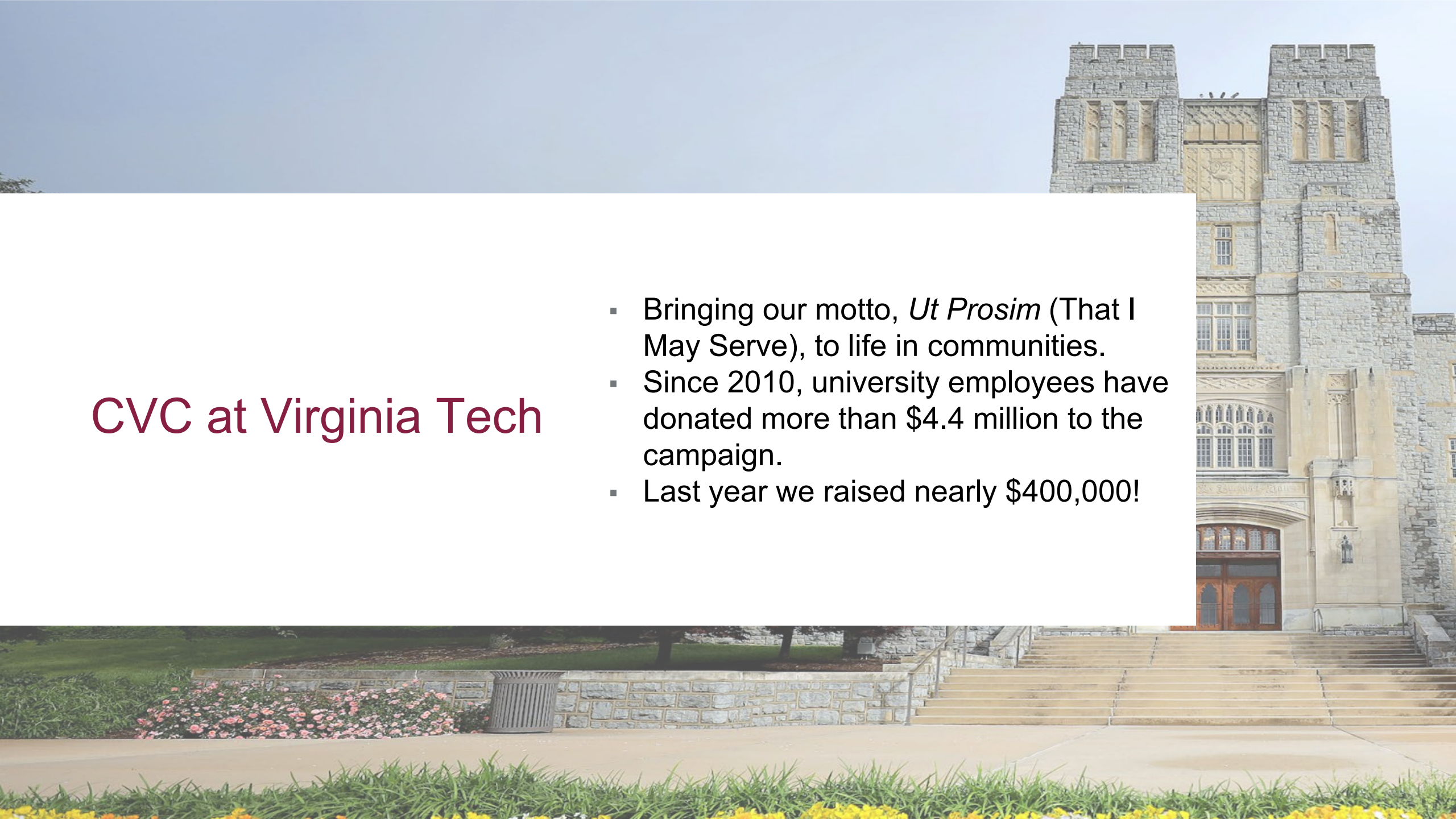
Does the state make money on this campaign?



- No! The commonwealth makes no money from CVC.
- An administrative fee is deducted at the end of the campaign out of the total donations.
- This fee is lower than most individual charities and is used to cover campaign costs only.

CVC at Virginia Tech

- Bringing our motto, *Ut Prosim* (That I May Serve), to life in communities.
- Since 2010, university employees have donated more than \$4.4 million to the campaign.
- Last year we raised nearly \$400,000!



Donating to CVC

- Multiple ways to give:
 - Payroll deduction is most popular and makes budgeting donations easier.
 - Donations may also be made by cash, check, or direct give.
- Employees may designate multiple charities with one donation.
 - Enables employees to give to more organizations that matter to them!
 - Employees can also give undesignated donations, which supports the [Virginia State Employee Fund \(VSEAF\)](#).





2023 Campaign

- **Dates:** October 3 – December 15
- **Goal:** \$400,000
 - Each college and senior management area has a goal
- **Our campaign honorary chair:**
 - Lynsay Belshe, Vice President of Auxiliary and Business Services
- **Our campaign co-chairs:**
 - Courtney Powell, Virginia Tech Carilion School of Medicine
 - Autumn Timpano, Environmental Health and Safety

Virginia Tech's online pledge system

- Online system is the easiest way to give.
- Employee can give one-time donation or choose payroll deduction.
- Charity designations are made here.
 - Multiple charities can be added and employee can choose how to divide donation.
 - Employee can designate equal amounts to all charities or specific dollar amounts to certain charities.
- A paper pledge form is available on website if needed.
 - Note: Employee MUST sign the pledge card for donation to be valid.

STEP ONE:

Choose the amount you'd like to donate

Amount Per Pay Period	<input type="text"/>
Total Donation	<input type="text"/>
Gift Type	<input type="text" value="Cash"/>

STEP TWO:

Direct your pledge

You can select to which of the 1,000 charities you'd like to contribute, or donate to the general fund. To designate your contribution, click on the *Add a charity* button below.

Amount Not Designated

\$0.00

Add a Charity

STEP THREE:

Determine acknowledgement

- ☒ I would like my gift to be anonymous.
- ☐ I would like to be acknowledged. Please share my name, address and gift amount with the charities I have selected.

STEP FOUR:

Finalize your pledge

Before submitting, please confirm the following information

The *Annual Per Pay Period* and the *Total Annual Pledge Amount* are correct.

If you directed your pledge to one or more charities, verify the designated charities appear in the *Direct your pledge* section above.

Submit Pledge



Visit
cvc.hr.vt.edu
for more information and
to make a donation
today!



CVC is one more way Virginia Tech is advancing regional, national, and global impact.

